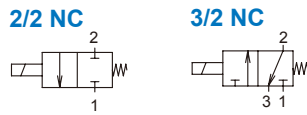
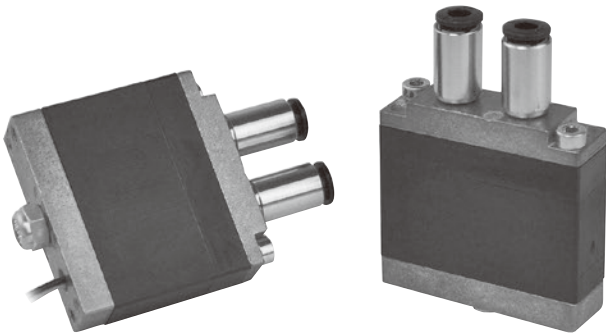


MVDA-120 series

DIRECT ACTING TYPE **COMPACT SOLENOID VALVE**



Specification

Model	2E1	3E1
No. of port	2	3
No. of position	2	
Medium	Non-lubricated dry air, Neutral gases	
Operating fluid temp.	-10~+50°C	
Operating pressure range	0~0.8 MPa	
Flow rate	100 N ℓ/min	
Response time	ON	< 2 ms
	OFF	< 2 ms
Ambient temperature	-10~+50°C	
Filtration rating	min. 40 μm	
Voltage	Speed-up: DC24V, Hold: DC5V	
Power consumption	0.8 W (Hold)	
Max. operating frequency	300 Hz (at 250Hz with driver board)	
IP protection class	IP62	
Weight	35 g	

Features

- Flow rate 100 Nℓ/min.
- Response time < 2ms.
- Product life: 500 million switching cycles.
- Ultra response frequency: 300Hz.

Order example

MVDA - 120 - 2E1 - NC - KK - S

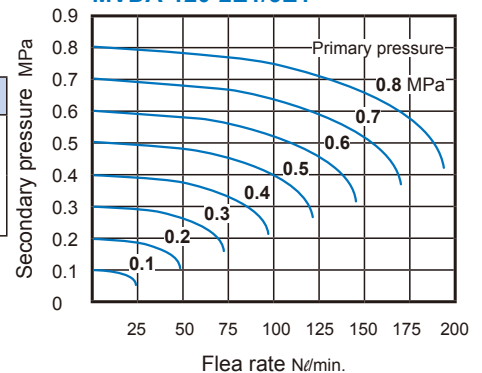
MODEL

BODY WIDTH

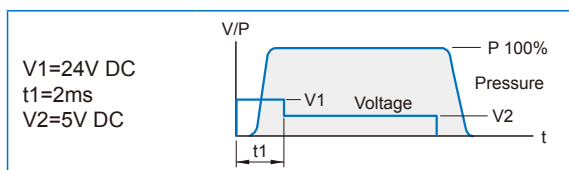
Port	Voltage	Wire
2E1-NC: 2 way (2 port)	KK: DC24V / DC5V (Speed-up in tension)	C: Without driver board S: With driver board (24/5V Signal converter)
3E1-NC: 3 way (3 port)	Speed-up: DC24V, hold: DC5V	

Flow features

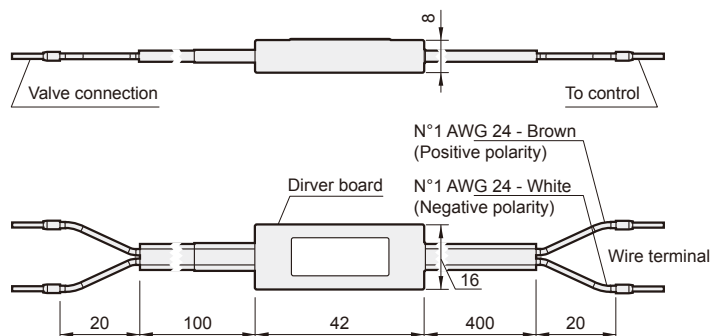
MVDA-120-2E1/3E1



Electrical control



The wire with driver board (S) dimensions



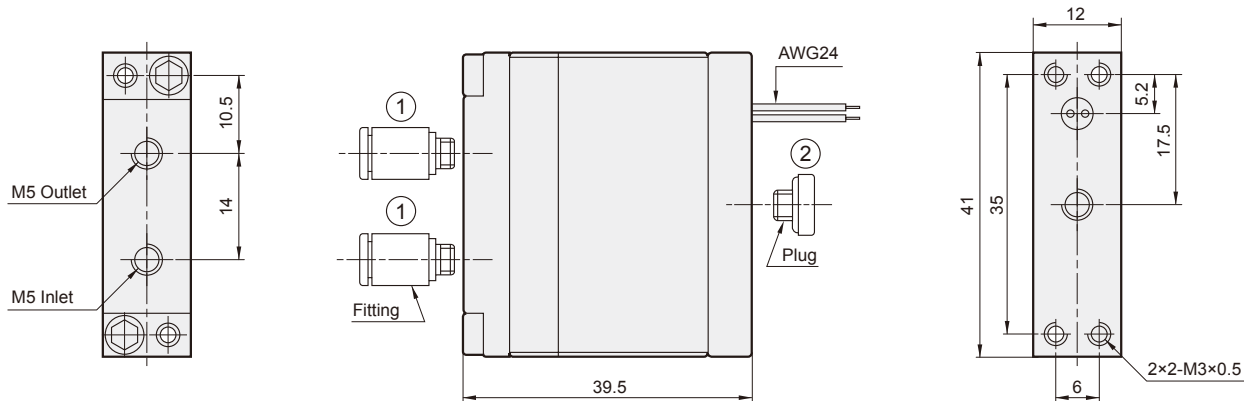
MVDA-120 Dimensions



DIRECT ACTING TYPE COMPACT SOLENOID VALVE

Mindman

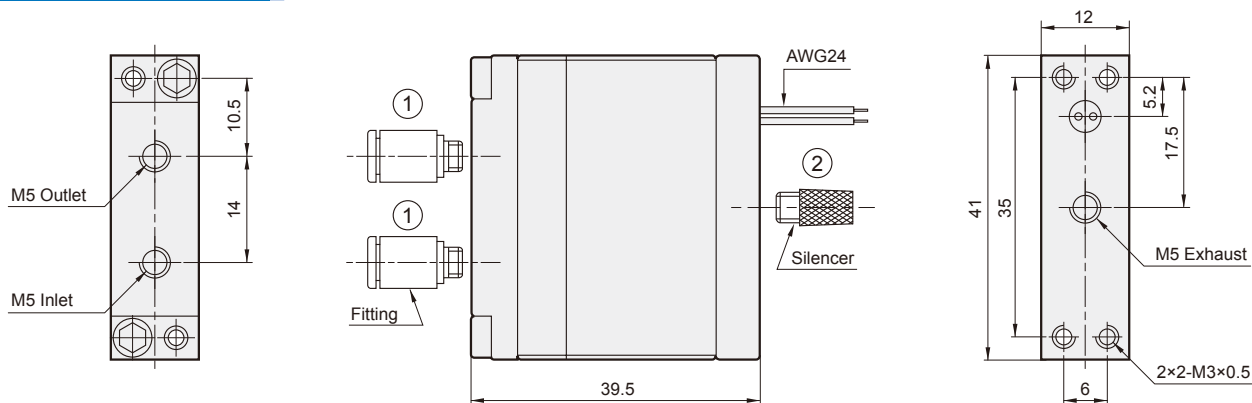
MVDA-120-2E1



Accessories

No.	Quantity	Description
1	2	Fitting $\varnothing 4/6$ (inch)
2	1	Plug

MVDA-120-3E1



Accessories

No.	Quantity	Description
1	2	Fitting $\varnothing 4/6$ (inch)
2	1	Silencer