

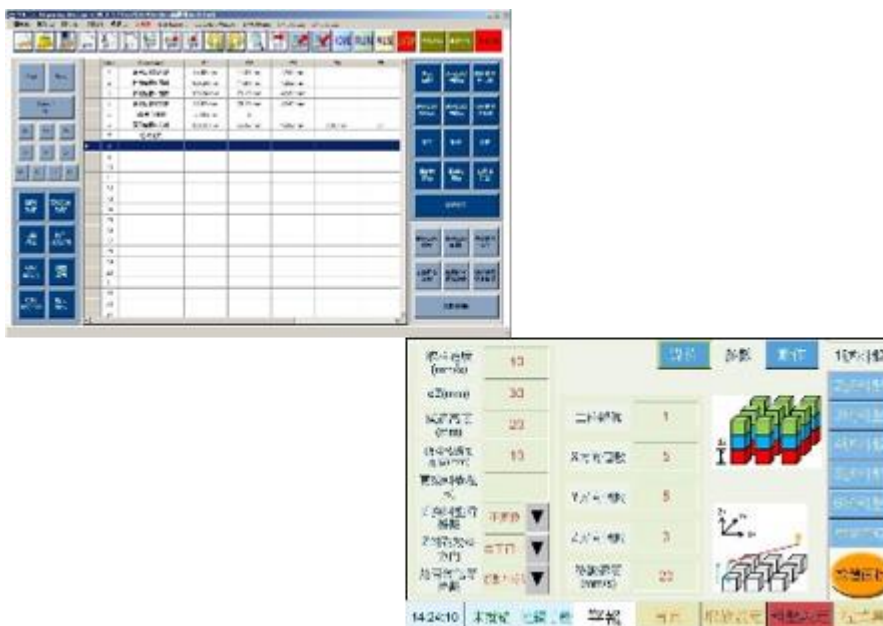
## Full-function touch screen pulse controller

- 8, 10, 15 inches, controller size to meet the needs of various places
- Support pulse communication
- Equipped with RS485, VGA, USB, 10 / 100M network port, D / A (5V) for input / output of external equipment
- Equipped with hand Wheel interface for external expansion



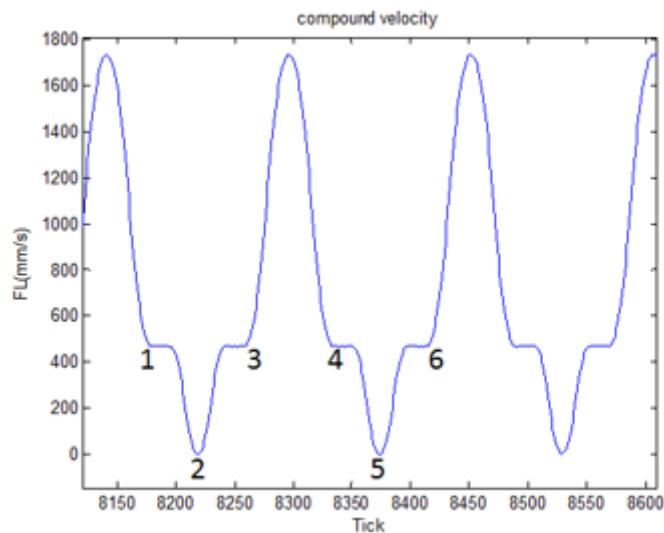
## Highly integrated customized development tools

- Using computer operation to easily customize screens and functions
- Making suitable systems based on industrial characteristics
- Can be used in the automation industry Case
- Macro program, PLC secondary development, highly integrated software and hardware



## Support multi-axis interpolation

- followed high speed and high precision CNC system advantages, support path interpolation, smooth velocity planning
- smooth corner support, to increase the efficiency of path
- provide a linear command arc command and



## Diverse accessories and system options

- handwheel
- AD / DA
- visual positioning module
- cloud monitoring and analysis system

轴名	轴号	轴型	轴长	轴径	轴重	轴速	轴力	轴温	轴压	轴振	轴位
1#	1	伺服	100	40	1.5	1000	1000	100	100	100	100
2#	2	伺服	100	40	1.5	1000	1000	100	100	100	100
3#	3	伺服	100	40	1.5	1000	1000	100	100	100	100
4#	4	伺服	100	40	1.5	1000	1000	100	100	100	100
5#	5	伺服	100	40	1.5	1000	1000	100	100	100	100
6#	6	伺服	100	40	1.5	1000	1000	100	100	100	100
7#	7	伺服	100	40	1.5	1000	1000	100	100	100	100
8#	8	伺服	100	40	1.5	1000	1000	100	100	100	100
9#	9	伺服	100	40	1.5	1000	1000	100	100	100	100
10#	10	伺服	100	40	1.5	1000	1000	100	100	100	100

