

# 直流电动机 DC MOTORS

■ 90W □ 90mm



## 电机性能参数 Motor Performance Parameters

型号 Model	电压 Voltage V	功率 Power W	空载参数No-load Parameters		负载参数Load Parameters			电刷寿命 Brush Life H	电机重量 Motor Weight kg
			转速Speed	电流Current	转速Speed	力矩Torque	电流Current		
			r/min	A	r/min	mN.m	A		
Z5D90-12□	12	90	3100	2.0 Max.	2600	330	12.0	2000	2.2
Z5D90-24□	24	90	3300	1.0 Max.	2800	307	5.0	2000	2.2
Z5D90-90□	90	90	3000	0.3 Max.	2900	307	1.4	2000	2.2

● 电机电压、功率及转速可在配件尺寸等条件下根据客户要求定制。  
Motor voltage, power and speed will be customized according to his requestment under the allowed circumstance of adoptable dimension.

## 种类 Type

### ● 电动机 Motor

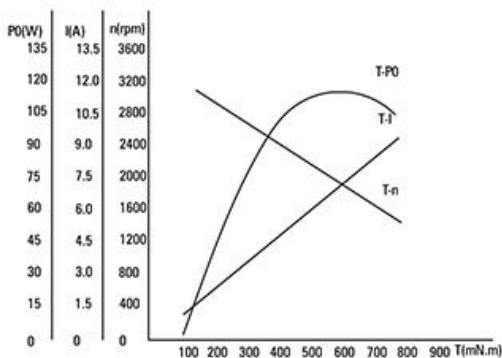
机型 Type	型号Model		
	齿轮轴型 Pinion Shaft	圆轴型 Round Shaft	圆轴型 Round Shaft
导线型 Lead Wire Type	Z5D90-12GN	Z5D90-12A	Z5D90-12A1
	Z5D90-24GN	Z5D90-24A	Z5D90-24A1
	Z5D90-90GN	Z5D90-90A	Z5D90-90A1

### ● 平行轴减速器（另售）Parallel Shaft Gearhead (Sold Separately)

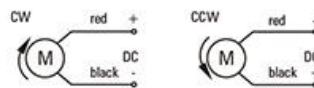
减速器种类 Gearhead Type	减速器型号 Gearhead Model	减速比 Gear Ratio
长寿命●低噪音 Long Life ● Low Noise	5GU□KB	3、3.6、5、6、7.5、9、12.5、15、18、25、30、36、50、60、75、90、100、120、150、180、200
	5GU10XK (中间减速器 Decimal Gearhead)	

● 减速器型号的□中为减速比的数值  
Enter the gear ratio in the box | ■=within the model name

### ● 电机特性曲线 Characteristic Curve Of Motor



### ● 电机接线图 Wiring Diagram Of Motor



● 标准引出线长度:300mm±10,型号:UL1015规格:AWG16;电机引出线长度、型号在配件尺寸等条件下可根据客户要求定制。  
Standard length of lead wire:300mm±10, model: UL1015 type: AWG16; lead wire length, model will be customerised by dient requestmant under allowed circumstance of adoptable dimension.

## ■ 装有减速器时的容许转矩 Gear Motor-Torque Table

- 减速器另售-中间减速器另售。

Gearheads are sold separately. Decimal gearheads are not available.

- 减速品型号的■中为减速比的数值。

Enter the gear ratio in the box(■) within the model name.

- □色表示与电动机同一方向运转，其他则为相反方向。

The colored background □ indicates the same rotating direction of the motor while the rotating direction of others are opposite.

- 转速是以电动机的额定转速为基准除以减速比而算出来的数值。实际转速将随负载大小变化而比所示数值减少2%~20%左右。

The speed is calculated by dividing the motor's synchronous speed by the gear ratio. The actual speed is 2%~20% less than the displayed value, depending on the size of the load.

- 希望以大于下表的减速比进行进一步减速时，可在电动机与减速机之间安装减速比为10的中间减速器。

这时的容许转矩为20N·m。

To reduce the speed beyond the gear ratio in the table, attach a decimal gearhead(gear ratio:10)between the gearhead and motor. In that case, the permissible torque is 20N·m.

## ■ 容许力矩单位 Allowance Torque Unit : 上段 Upside ( N.m ) /下段 Belowside ( kgf.cm )

型号 Type	减速比 Gear Ratio	3	3.6	5	6	7.5	9	10	12.5	15	18	20	25	30	36	40	50	60	75	90	100	120	150	180	200
Z5D90-24GU	转速 Speed r/min	933	778	560	467	373	311	280	224	187	156	140	112	93	78	70	56	47	37	31	28	23	19	16	14
	5GU□KB	0.75	0.90	1.24	1.49	1.86	2.24	2.24	2.80	3.36	4.03	4.03	5.03	6.04	7.25	8.06	10.1	12.4	15.1	16.3	18.1	20.0	20.0	20.0	20.0
		7.31	8.77	12.2	14.6	18.3	21.9	21.9	27.4	32.9	39.5	39.5	49.3	59.2	71.1	78.9	98.7	118	148	160	178	200	200	200	200

## ■ 容许悬挂负载·容许轴向负载 To Allow The Hoisting Of The Load Allow Axial Load

电动机(圆轴型)→272页

Motor(Round Shaft)→P272

减速机→272页

Gearhead→P272

## ■ 减速机的容许负载惯性惯量 J Permissible Load Inertia J For Gearhead

→272页→P272

- 圆轴型的转轴部分 Shaft Section Of Round Shaft Type

除重量及轴部外电动机外形与齿轮轴型相同。

Excluding weight and the shaft section motor shape are the same as those of the pinion shaft type.

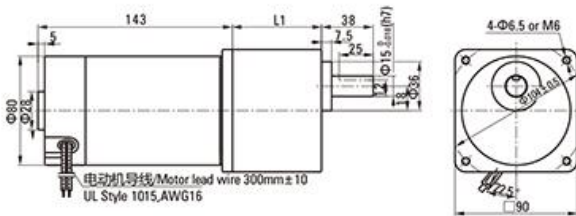
## ■ 外形图(单位 mm) Dimensions(Unit mm)

减速机附有安装用螺丝 Mounting screws are included with gearhead.

- 导线型 Lead Wiring Type

重量 Weight : 电动机 Motor : 2.2kg

减速机 Gearhead : 1.5kg



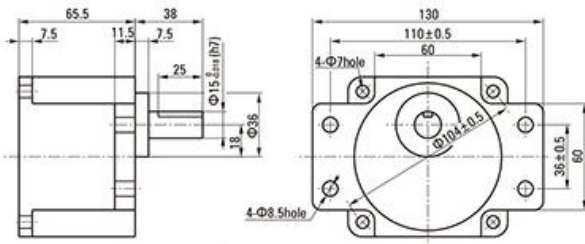
电动机型号 Motor Model	减速机型号 Gearhead Model	减速比 Gear Ratio	L1
Z5D90-12GU Z5D90-24GU Z5D90-90GU	5GU□KB	3~200	65.5

- 减速机型号的□中为减速比的数值 Enter the gear ratio in the box (□) within the model name

- 凸缘安装型减速机 Flange Mounting Reducer

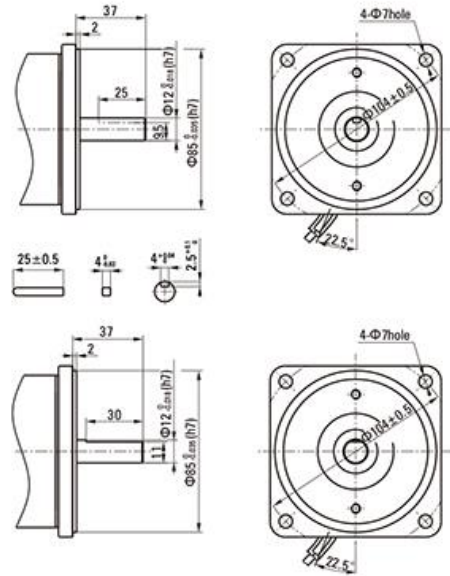
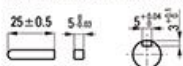
可安装在GU齿轮轴型上 Can be mounted on GU type gear shaft 5GU□K

重量 Weight: 1.5kg



- 键·键槽(减速机附件)

Key·Keyway (The Key Is Included With The Gearhead)



- 中间减速器 Decimal Gearhead

可安装在GU齿轮轴型上 Can be connected to GU pinion shaft type 电动机外形与齿轮轴型相同

5GU10X

重量 Weight : 0.651kg

