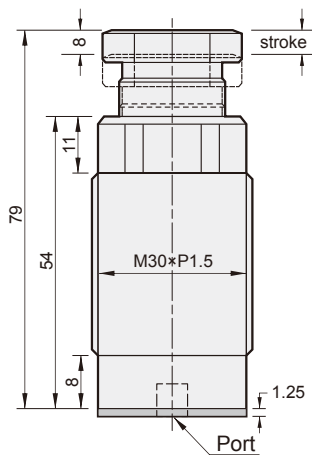


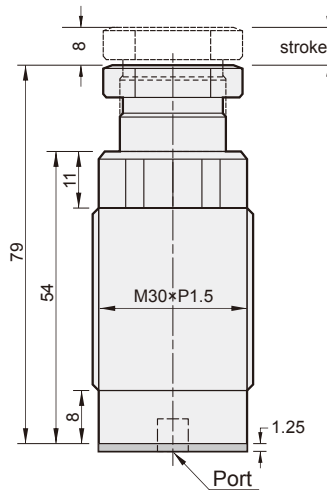
### Features

- Hydraulic work support is used to both minimise vibration during machining and offer increased support.
- A type unit works on the outward stroke with a internal spring.
- B type unit works with oil pressure providing the motive force.

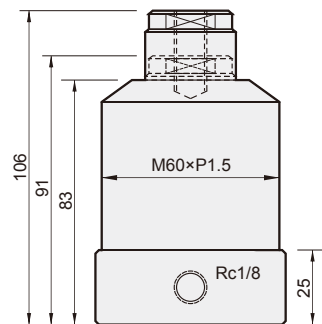
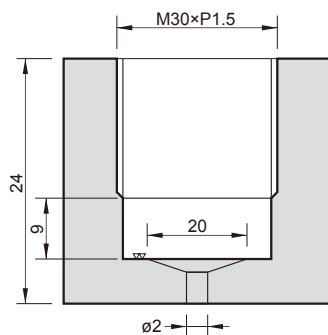
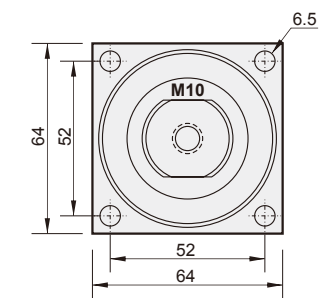
### MSP-16A



### MSP-16B



### MSP-30A



### Mounting diagram

Model Item	MSP-16A	MSP-16B	MSP-30A
Normal operating pressure	10~35 MPa		7.5~35 MPa
Cylinder operating	Single-acting		
Piston $\phi$ (mm)	16		30
Stroke (mm)	8		15
Theoretical force (20 MPa)	210 kg		750 kg